



# THE CHURCH OF THE SACRED HEART

Tel: 020 8946 0305

Email: [wimparish@sacredheartwimbledon.org.uk](mailto:wimparish@sacredheartwimbledon.org.uk)

Web: [www.sacredheartwimbledon.org.uk](http://www.sacredheartwimbledon.org.uk)

Sacred Heart Presbytery

Edge Hill, Wimbledon

London, SW19 4LU

3rd November 2019

## Newsletter

Vol 5, Issue 39

### Thirty-First Sunday

Thirty-First Week in Ordinary Time

(C)

Vol. I psalter week 3

### Next Sunday's Readings

- 2 Maccabees 7:1-2. 9-14
- Ps. 16:1.5-6.8.15. R.v15
- 2 Thessalonians 2:16-3.5
- Luke 20:27-38

### Inside this issue:

The Lord extends His Passion and Love to all	1
Parish News	2
Announcements	2
Parish Organisations	2
Social, Cultural & Notices	3
Exploring our Faith	3
Mass times & Intentions	4

## The Lord extends His Passion and Love to all

Asking partners who are preparing for their marriage why did they fall in love with each other, they often mention all the good qualities that they found in one another and that is what motivates their passion and love. It is human and that's our nature. "What motivates my passion and love for you are the good qualities you portray to me." However the Lord our God is great that his motivation for showing us his passion and love is based on both the good and bad qualities that we have. What motivated our Lord Jesus Christ to visit Zacchaeus was his great passion and love for the sinners. He did not come for the righteous but sinners. He often associated with the sinners with a purpose of supporting their conversion. Despite all our bad qualities and weaknesses, the



Lord loves us. He is willing to be with us and support us by his grace so that we can improve on our bad qualities. The Lord is not happy with the death of a sinner. The rehabilitation of a sinner is what matters before his sight. The book of Wisdom has given us the emphasis that the Lord is merciful to all, he overlooks men's sins so that they can repent. He loves all that exists and he has no hatred for anybody. The Lord conserves all he created. His focus is to correct, reconcile and

reconstruct our brokenness. The end is conversion and to put trust in the Lord. His mercy is everlasting. Give thanks to the Lord for he is good, for his love endures forever, Ps 119.

### THE PARISH PASTORAL TEAM

Parish Priest: Canon John Clark MA

Parish Clergy: Fr Joseph Donkor MA, Fr Dennis Bukonya CSSp and Deacon Julian Burling

Team Members: Sr Francis SSA, Sr Dorothy Perrott OSU and Cristina Connolly

Youth Minister: Eleanor Bowman

Adult Faith Formation Officer: Kelly Hockey

## SECOND COLLECTION

Next Sunday 10 November the second collection will be for the Archbishop's Administration Fund, a collection that helps to meet the cost of the central administration of the Diocese.

## COLD WEATHER WARNINGS PREDICTED

Parishioners are being advised that due to cold weather warnings being predicted they are advised to walk in the church grounds with extreme caution, this being the car park, steps and walk ways in and around the church grounds. There might be potential site limitations (Closing off of certain areas) so parishioners must be aware of their safest routes.

Grit teams will spread grit before the snow falls and will monitor the weather warnings.

Parishioners are advised that they use the church grounds at their own risk including driving in the church car park.

## JESUIT STAMP CUTTING

There will be NO stamp cutting on 7<sup>th</sup> November. We will be meeting on 14<sup>th</sup> November at 9.30am at 11 Edge Hill, SW19 4LR. Volunteers always welcome

## SAFEGUARDING TRAINING SESSIONS

for all parish volunteers who work with children will be held on Tuesday 5 November (7.30-9pm) and Saturday 16 November (11am -12.30pm). An invitation letter is being sent to those concerned. Please reply by 28 October. All volunteers in parish groups working with children are expected to attend one of these sessions. If you think you are eligible and you have not received an invitation, please contact [sacredheartsafeguarding@gmail.com](mailto:sacredheartsafeguarding@gmail.com).

## Parish News

### AT HOME

There will be NO *At Home* on Monday 4 November.

### SCHOOL SLIPS

School admission forms will be collected again this weekend.

### FUND RAISING EVENT

Arts & Crafts exhibition, Lower Hall, Saturday 16th November 6-8.30pm, Sunday 17th November 8.30am - 9pm  
We still have tables available for any parishioners wishing

to show or sell artwork/ crafts/ jewellery etc.

Please email [fundraisingevents@sacredheartwimbledon.org.uk](mailto:fundraisingevents@sacredheartwimbledon.org.uk) or call Alison 07711 583 414 or Moya 07884 346 609 for details.

## Announcements

### ARCHBISHOP

#### MICHAEL BOWEN †

The requiem Mass for Archbishop Michael Bowen will be celebrated at St. George's Cathedral on Monday 4 November at 12.30pm. All are welcome.

A Memorial Mass for Archbishop Michael Bowen will be celebrated at the Sacred Heart Church on Thursday 28 November at 6.30pm.

### HOLY SOULS ENVELOPES

If you would like to have your deceased family members remembered in the Masses during November, write their names on a paper and put them into the Holy Souls envelopes provided. They will be placed in a box at the altar during Masses

this month. Any donations enclosed will go towards Masses for the Holy Souls during the year.

### BLESSING OF GRAVES

On Sunday 10 November at 3pm, there will be a short service outside the chapel at the Merton and Sutton Joint Cemetery in Garth Road. Following it, clergy will be available to bless individual graves for any relatives or friends of parishioners who are buried there or in the Morden Cemetery/Crematorium.

### REMEMBRANCE DAY

The scouts will be holding a Remembrance Day Mass on Monday 11 November at 6.30pm in the church.

### THANKSGIVING MASS

You are cordially invited to a

Thanksgiving Mass for Archbishop Peter Smith at St George's Cathedral on Saturday 16 November at 12.30pm. There will be a possibility to contribute to a collection for Archbishop Peter.

### WELCOME MASS

All new parishioners are cordially invited, with their families, to Mass on Saturday 23 November at 10 am, followed by a reception in the Lounge. Please also register your family details by visiting the parish website.

### SPECIAL MASS

A special Mass for deceased parishioners and members of the clergy of the deanery will be held on Wednesday 27 November at 7pm at St Winefride Church in South Wimbledon, SW19 1EP.

## Parish Organisations

### YOUTH GROUP

The Youth Group for those in y10+ will meet again today 3 November from 6-7.45pm in the Youth Room. All are welcome.

### BEREAVEMENT SUPPORT

There will be a special Mass for all who have been bereaved, (no matter how long ago) and their loved ones, on **Saturday 30**

**November at 10 am.** This will be followed a reception in the Parish Lounge. Everyone welcome.

### VOTE FOR MEMORY LANE CLUB

If you shop at **Raynes Park Waitrose** please use your green token(s) to vote for Memory Lane Club supporting those with dementia and their carers in our community.

### SOCIAL EVENT

All Ministers of the Eucharist and Volunteers at the Parish are invited to a Social event; Tuesday 26th November at 7.15 pm in the Lounge. Please bring a small plate of finger-food. Drinks provided. RSVP. [gmshill02@aol.com](mailto:gmshill02@aol.com) or 07561 704 706

## Social, Cultural & Notices

### 'Twas the Week Before Christmas

MyRaynesPark will once again be presenting under the above title an 'open mic' evening of stories, poems and other readings relating to Christmas. This will take place on Wednesday 4 December from 7.00pm to 8.45pm at the Raynes Park Library. Read one of your own compositions or a favourite piece from the treasury of Christmas literature.

If you want to be sure of a performance space, email [reading@myraynespark.co.uk](mailto:reading@myraynespark.co.uk). Performers of all ages are welcome and each will have a maximum of four minutes.

Even if you choose not to be a reader, the organisers invite you to come along and enjoy the evening which has always been an informal and friendly community occasion.

### NEWMAN CIRCLE

All are welcome to the next meeting of the Newman Circle on Wednesday 20 November at 7.30pm in the Lounge when Prof Paddy Stone, Head of Department at the Marie Curie Palliative Care Research department, University College London, will talk about 'Caring for people at the end of life ... A doctor's perspective'.

### RACE NIGHT

Sacred Heart Chorus & Edge Hill Players Race Night Saturday 30 November in the Lower Hall at 7.30pm, tickets are £10 (including a glass of prosecco, pizza and race card, pay-bar or bring your own), available from [sheena.macd@btinternet.com](mailto:sheena.macd@btinternet.com). Come and have a fun evening!

For your diaries: Saturday 13 June 2020: Sacred Heart Chorus Concert including Mendelssohn-Bartholdy's *Lauda Sion*.

### CALLING ALL SINGERS

Katy Lees, Giles Kennedy and Katy's Songbirds invite you to join their Christmas Celebration on Thursday 19 December at 7.30pm in our church. They return for an evening of traditional carols this time in aid of those who may be alone and isolated around Christmas. Katy and her friends would love to create a choir of 100+ male/female voices; the next rehearsal is on Friday 8 November from 7.30-8.30pm (and then 6 December) at Holy Cross Church Hall, KT3 6HT, if you would like to join the Christmas Celebration please contact Katy at [katylees@virginmedia.com](mailto:katylees@virginmedia.com) for more details.

### KITCHEN WORKER NEEDED

St Teresa's Home For The Elderly

3/ 4 evenings per week 5p.m. to 8p.m.  
To serve prepared Supper,  
Please apply to: Admin [info@stteresashome.co.uk](mailto:info@stteresashome.co.uk) or 0208 879 7366 option 3

### New to the Parish?

Please introduce yourself to a member of the Parish Team after Mass and register online at <https://sacredheartwimbledon.org.uk/> or by filling in a registration form, available at the back of the church.

### CONTINENTAL BREAKFAST

This Sunday there will a Continental Breakfast served in the Lower Hall after the 8:15 and 9:45 Masses until midday.

### CONFIRMATION 2020

We are now taking details of those families with young people in Y8 or above interested in the Confirmation programme for 2020. Please register on the parish website

## Exploring our Faith

### A DAY WITH MARY

You are invited to *A Day with Mary* on Saturday 9 November at Westminster Cathedral, SW1 1QW starting at 9.45am (-5.30pm) with Entry Procession of Our Lady of Fatima, Angelus, Crowning, sung Litany, Mass in honour of Our Lady; Celebrant & Preacher: Fr Rajiv Michael, Sermon on Our Lady by Fr Jeremy Davies.

There will be a *A Day With Mary* Pilgrimage to the Holy Land from Sunday 22 - Tuesday 31 March 2020, 4 nights in Nazareth and 4 nights in Old Jerusalem; £1,390 p.p. (incl return flight London-Tel Aviv, transfers, taxes, entry fees, professional guide, daily Mass and Rosary, Catholic priest chaplain); for full infor-

mation and booking form: [adwmary.uk@gmail.com](mailto:adwmary.uk@gmail.com) or call 020 8641 6418.

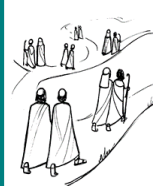
### CENTERING PRAYER

*Centering Prayer* is a way of praying from the stillness of the heart without words. To find out more and to experience this method of prayer first hand, come to an Introductory Workshop at St. Mark's Church, SW19 7ND on Saturday 16 November from 11.30am-4.30pm. Tea/coffee & biscuits provided; bring a packed lunch and a cushion if liked; suggested donation £10. Fliers are available at the back of our church. For more info or to let us know you intend coming, please email Clare Morgan on [claremorgan179@gmail.com](mailto:claremorgan179@gmail.com). If partici-

pants request it, there will be 6 optional one-hour follow-up sessions ([www.contemplativeoutreach.org.uk](http://www.contemplativeoutreach.org.uk))

### STUDY WEEKEND

Dominican Youth Movement Study Weekend: I believe in the Holy Spirit. A weekend of prayer and study centred around the Holy Spirit.  
Fri, 6 Dec 2019, 16:00 – Sun, 8 Dec 2019, 14:30  
SPEC Centre  
Waxwell House  
125 Waxwell Lane  
Pinner, HA5 3EP  
For Information: [dym@english.op.uk](mailto:dym@english.op.uk)



### A SHARED JOURNEY OF FAITH

If you are interested in exploring the Christian faith within the Catholic Church you are welcome to journey with us through weekly meetings held on Mondays in the Parish Lounge. For more information please take a leaflet from the back of the church entitled R.C.I.A. (Rite of Christian Initiation of Adults into the Catholic Church).



### CELEBRANTS FOR THIS SUNDAY

6.30pm (Sat) Fr D Bukenya      11.15am Fr J Donkor  
8.15am Fr J Donkor              12.45pm Canon J Clark  
8.30am\* Fr D Bukenya            5.00pm Fr J Donkor  
9.45am Canon J Clark            8.00pm Fr D Bukenya

\* SH School Mass Centre

### MASS INTENTIONS FOR THIS WEEK

Sat 2 6.30pm Nora Quinn RIP  
Mon 4 7.30am Mr & Mrs O'Hare RIP  
10.00am Lucy Dantas RIP  
6.30pm Dec'd Queen of Peace Prayer Group RIP  
Tue 5 7.30am Alfred Jessiman RIP  
10.00am Sr Pauline McGrotty RIP  
6.30pm Pereira Almeida RIP  
Wed 6 7.30am Michael Zawadzki RIP  
10.00am Mary Armour RIP  
6.30pm David & Lorenza Boyce RIP  
Thu 7 7.30am Private Intention  
10.00am Bertha D'Costa RIP  
6.30pm Joaquin Pires & Ana Rosa Carneiro RIP  
Fri 8 7.30am Mr & Mrs Richard & Sunita Fernandez  
10.00am Stanley Lewis RIP  
6.30pm Patricia Lenihan RIP  
Sat 9 7.30am Catherine Maria Thompson Birthday  
10.00am Family of Patricia & Louise Riley Ints

### WE REMEMBER IN OUR PRAYERS

**Those who have died recently:** Angela Sims, John Kennedy

**Those whose anniversaries occur at this time:** Rita Cavin, Erika Wright, Philippe Chateau, Robert Threlfall, Cynthia Jackson

**The sick:** Richard Ferris, John Hanrahan, Tilly Walters, Ian Parr, Lucy Melkees, David Carrier, Colin Sims, Mary Ann Williams, Maria Keaveney-Jessiman, Annette Wheatley, Paul Jong, Richard Conceicao, Sheila Soodin, Maureen Searle, Kieran Walsh, Paul Saunders, Carol Donnelly, Mary Purcell Cosgrave, Damji Vadhia, Margaret Birch, Manjula Topno, Alina Hancock, Simon Hull, Lalita Nagar, Cath O'Neill, Andrew Tan, Tom Searle, John Burke-Gaffney, Donald Derx, Margaret Lumley, Electa Almeida, Brian Sewell

Please note that for data protection reasons, individuals must explicitly agree for their names to be mentioned in our newsletter. Please let the Parish Office know **in writing** if either your name or the names of your relatives and friends should appear in our sick list.



### COLLECTIONS

Collection at Mass last Sunday came to **£1,619** in loose plate giving and **£437** from the Planned Giving envelopes making a total of **£2,056**. This does not include £4,000 from monthly standing orders.

### FEAST DAYS, MEMORIALS THIS WEEK

**Monday 4 November** St Charles Borromeo, Memorial

**Thursday 7 November** Dedication of the Cathedral Church of St George; St Willibrord, Bishop

**Saturday 9 November** The Dedication of the Lateran Basilica in Rome

### EXPOSITION

Sundays: 3.00 - 4.00pm

(Prayers for the Pope and the Catholic Church in Britain)

Wednesdays: after the 7.30am and 10.00am Masses and 5.25 - 6.25pm

Fridays: 5.25 - 6.25pm

On first Fridays of the month there is exposition from after the 6.30pm Mass to Midnight.

### RECONCILIATION

Saturdays:

10.30 - 11.30am

3.00 - 4.00pm

6.00 - 6.20pm

Monday - Friday:

6.00 - 6.20pm

### MUSIC AT THE 11.15am MASS

### PARISH SERVICES

Parish Office/Reception Hours: 9am - 5pm (Mon-Fri) 9.30am - 1pm (Sat) 9am - 1pm (Sun) [A range of religious and greeting cards are on sale at very competitive prices - please feel free to call to view.]

Executive Assistant & Hall bookings: Thelma D'Costa (Mon - Fri 9.30am - 5pm) Caretaker: George McLennan

Parish Pastoral Council: [ppc@sacredheartwimbledon.org.uk](mailto:ppc@sacredheartwimbledon.org.uk) or contact Anne Waldron (Chair) at [anne@annewaldron.com](mailto:anne@annewaldron.com) or 07886 034 323

Baptism, Marriage, First Sacraments, Funerals contact the parish 020 8946 0305

Bereavement Support: For more information please contact the co-ordinator by email [bereavementsacredheart@gmail.com](mailto:bereavementsacredheart@gmail.com) or call 020 8946 5198, Referral forms available in the Presbytery Reception

Admission to Hospital: RC hospital chaplains will only be aware of your admission if you specifically ask for the hospital chaplaincy team to be informed. Please tell a member of the ward staff, it is also helpful to let your parish priest know.

[St George's Hospital Chaplaincy: Fr Mark Higgins (020 8725 3069)]